



## RESEARCH

## Seroprevalence and Molecular Detection of *Coxiella burnetii* Infection in Sheep, Goats and Human in Egypt.

Nashwa O. Khalifa<sup>1</sup>, Fatma I. Elhofy<sup>2</sup>, Hanan A. Fahmy<sup>3</sup>, Mona M. Sobhy<sup>4</sup>, Agag, M. A.<sup>5</sup>

<sup>1</sup>Zoonoses Dept., Faculty of Veterinary Medicine, Benha University, Toukh, 13736, Egypt

<sup>2</sup>Bacteriology, Immunology and Mycology Dept., Faculty of Veterinary Medicine, Benha University, Toukh 13736, Egypt

<sup>3</sup>Biotechnology Department, Animal Health Research Institute (AHRI), Giza 11331, Egypt

<sup>4</sup>Department of Reproductive diseases, ARRI, ARC, 12556 Giza, Egypt.

<sup>5</sup>Theriogenology Dept., Faculty of Veterinary Medicine, Benha University, Toukh, 13736, Egypt

## ARTICLE INFO

Received 15 Dec. 2015

Accepted 15 Jan. 2016

## Corresponding Author:

Fatma I. Elhofy

Bacteriology, Immunology and Mycology Department, Faculty of Veterinary Medicine, Benha University, Toukh 13736, Egypt

Email; fatmaelhofy@yahoo.com

**Key words:** *Coxiella burnetii*, sheep, goats, farm workers, IFAT, touch-down PCR. **Egypt**

## ABSTRACT

Query (Q) fever is an ubiquitous zoonosis caused by *Coxiella burnetii*. The present study was carried out to determine the prevalence of *C. burnetii* in apparently healthy sheep, goats and farm workers. Raw milk and serum samples were randomly collected from 200 sheep, goats (100 of each) and 30 farm workers from Qalubia governorate, Egypt during 2014/2015. The milk and serum samples were investigated for IgG antibodies against *C. burnetii* phase II antigen by indirect immunofluorescent antibody test (IFAT). The seropositive samples were confirmed by touch-down PCR with specific primers which amplify transposon-like region of *C. burnetii*. The results showed that antibodies against *C. burnetii* in sheep raw milk and sera were 17% and 23% respectively, in goat raw milk and sera were 19% and 27% respectively and in human was 23.3%. PCR targeting IS1111 gene confirmed the presence of *C. burnetii* DNA in sheep and goats raw milk and sera were 82.4%, 89.5%, 91.3% and **85.2%** respectively and in farm workers was 57.1%. **These** results proved that the apparently healthy sheep and goats are an important reservoir of *C. burnetii* infection. The farm workers constitute an occupational risk group for *C. burnetii* infection, for their contact with infected livestock.

©2016, IOSI, All Right Reserved.

## INTRODUCTION

Q fever is a zoonotic disease caused by *Coxiella burnetii*, a small obligate intracellular Gram-negative pathogen worldwide spread, except New Zealand (Maurin and Raoult, 1999 ; YinMing-Yang et al., 2015 ). Sheep and goats are considered as the main reservoir of infection for man, like cattle. The most common pathological manifestations of chronic Q fever are abortions and stillbirths. In sheep and goat flocks with reproductive disorders, animals contemporarily shed the bacterium through vaginal mucus, feces and milk. In a recent work, goats have been shown to eliminate *C. burnetii* mostly through milk while sheep mainly through vaginal mucous or feces (Rodolakis, 2009). *C. burnetii* was a cause of abortion waves at 28 dairy goat farms and 2 dairy sheep farms in the Netherlands (Van den Brom et

al., 2015). It persists for several years, and is probably lifelong. Sheep, goats and cows are mainly subclinical carriers, but can shed bacteria in various secretions and excreta. Humans generally acquired the infection through air-borne transmission from animal reservoirs, especially from domestic ruminants (OIE, 2010). Epidemics still occur in other slaughterhouse workers as well, recent cases have been reported in New South Wales and in Scotland (Gilroy et al., 2001; Wilson et al., 2010). High risk groups include people working with possible infected material (slaughterhouse workers, veterinarians, meat-processing workers), persons living in or next to farms, and laboratory personnel processing eventually infected organs and tissues (Borriello et al., 2010). Infection is principally transmitted by inhalation of desiccated aerosol particles, and through contact with infected animals,

their reproductive tissues or other animal products, like wool (ECDC, 2010). *C. burnetii* is secreted in the milk, therefore the ingestion of contaminated food such as raw milk and dairy products, represent a possible source of infection for humans (Maurin and Raoult, 1999). Clinically, acute Q fever in human showed flu-like symptom often followed by pneumonia, whereas chronic type of the disease showed endocarditis and caused death (Setiyono et al., 2005).

*C. burnetii* undergoes phase variation in which antigenic transition occurs from the wild type phase I to a virulent phase II during successive passages in embryonated eggs or in cell cultures (Kovacova and Kazar, 2002). Serologic assay may detect antibodies to phase II and phase I of *C. burnetii*. Phase II antibodies are more prevalent during acute infection, while chronic infection is characterized by a predominantly phase I antibody response (Fornier et al., 1998). A micro-immunofluorescence technique (IFAT) is the current method for the serodiagnosis of Q fever (Tissot-Dupont et al., 1994). IFAT is suitable technique for diagnosing Q fever and its therapeutic follow-up and is a good candidate for screening sera in large numbers (Slabá et al., 2005). Seroprevalence studies did not provide information on the incidence of current infection in humans or animals. Several typing methods have been used for the identification of *C. burnetii* strains, such as nested PCR assay (Mazyad and Hafez, 2007, Rahimi et al., 2010), real-time PCR (Szymańska-Czerwińska et al., 2015) and touch-down PCR (Khanzadi et al., 2014), trans-PCR targeting IS1111, the repetitive transposon-like region of *C. burnetii* (Vaidya et al., 2008). These tools are very useful for epidemiological investigation, particularly to clarify links regarding sources of infection, for better understanding of the epidemiological emerging factors, and to a lesser extent, for evaluating control measures.

Little information is available about *C. burnetii* in sheep and goat infection in Egypt, so the objective of the present study was to investigate the seroprevalence of *C. burnetii* by IFA and to determine the presence of *C. burnetii* DNA in seropositive raw milk and sera that may contribute to be source of transmission of the organism.

## Materials and Methods

### Sampling

Raw milk, and blood samples were collected from apparently healthy 200 sheep and goats (100 of each) 1 to 3 years old. Samples were collected under aseptic conditions from randomly distributed farms of sheep and goats in different localities in Toukh city, Qalubia governorate, Egypt during 2014/2015. Blood samples were collected from brachial veins of farm workers (n=30) from the same farms. Milk and sera samples

were transferred in sterile screw capped tubes and stored at -20°C until processed.

### Identification of *Coxiella burnetii* by Indirect Immunofluorescence Assay (IFA)

The reagents were commercially provided from bioMerieux SA, Marcy-l'Etoile, (France). Milk and sera were tested for IgG antibodies against *C. burnetii* phase II by using slides coated with *C. burnetii* phase II. The IFA was performed as described by the manufacture. Serial twofold dilutions of milk and sera were prepared in a phosphate buffered saline (PBS) with a goat anti-human IgG-fluorescein isothiocyanate (FITC) immunoconjugate, *C. burnetii*-positive rabbit serum and *C. burnetii*-negative rabbit serum. The slides are examined under ultraviolet light at a magnification of 400x by fluorescence microscope. Samples that showed green fluorescent color at a titre  $\geq 1:64$  are considered positive (Vaidya et al., 2008).

### DNA Extraction

A volume of 1 ml milk was centrifuged at 8000 g for 60 min, the cream and milk layers were removed and the pellet was washed and resuspended twice in 50 $\mu$ l distilled water (Mohammed et al., 2014). Then DNA extraction was applied by using QIAamp kit (Qiagen, Hilden, Germany). according to the manufacturer's instructions for milk and serum samples.

### Oligonucleotide Primers

The oligonucleotide primers were designed according to published DNA sequences of the transposon-like repetitive region of the *Coxiella burnetii* genome (IS1111 gene). Trans-1 and trans-2 primers with the following sequence were used (Metabion, Germany). Trans-1 (5'-TAT GTA TCC ACC GTA GCCAGT C-3') and trans-2 (5'-CCC AAC AACACC TCC TTATTC-3') (Hoover et al., 1992).

### DNA amplification by Touch Down PCR (trans-PCR)

The trans- PCR was carried out as described by Vaidya et al., (2008). The PCR mixture (25  $\mu$ L) included 3  $\mu$ L of template DNA, 2 $\mu$ M of each primers and 2.5  $\mu$ L PCR Master Mix (Jena Bioscience Co. Jena, Germany), in an automated DNA thermal cycler (T- Biometra, Gottingen, Germany). The cycling denaturation of DNA at 95°C for 2 min, followed by five cycles at 94°C for 30s, 66 to 61°C (the temperature was decreased by 1°C between consecutive steps) for 1 min, and 72°C for 1 min. These cycles were followed by 35 cycles consisting of 94°C for 30s, 61°C for 30s, and 72°C for 1 min and then a final extension step of 10 min at 72°C. Following amplification, 15  $\mu$ l from each PCR containing amplified products were loaded onto 1.5% agarose gel and stained with ethidium bromide in gel electrophoresis and visualized under UV rays against GeneRuler 100 bp plus DNA ladder (molecular weight marker) ready to

use (Fermentas, Canada). Every PCR run included deionized distilled water as negative control. The positive result is indicative at 687- bp.

**Results**

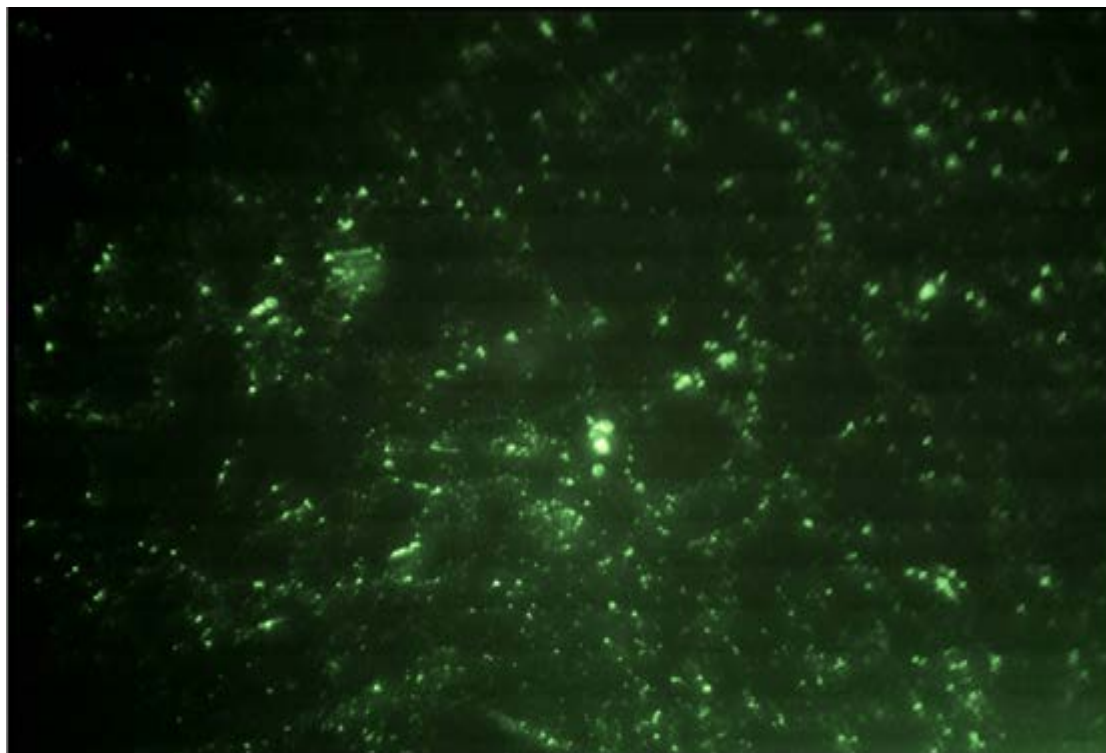
The presence of *C. burnetii* was evaluated in sheep and goats raw milk and serum samples. A percentage of 17% (17) sheep raw milk, 23% ( 23) sheep sera, 19% ( 19) goat raw milk and 27% ( 27) goat sera were seropositive by IFA test at a titre  $\geq$  1:64 for *C. burnetii*. For farm workers, 23.3% was seropositive for IgG

antibodies against *C. burnetii* phase II (Table, 1 and Figure, 1).

Touch-down PCR assay targeting the IS1111 gene of the organism by trans-1 and trans-2 primers resulted in 14 out of 17 sheep raw milk samples (82.4%), 21 out of 23 sheep sera (91.3%), 17 out of 19 goat milk samples (89.5%), and 23 out of 27 (74.1%) goat serum were positive for *C. burnetii*, whereas 4 out of 7 human serum samples (57.1%) were detected (Table, 1 and Figure, 1).

**Table 1: Prevalence of *Coxiella burnetii* in sheep, goats and farm workers.**

samples	No. of samples	IFA		PCR	
		Positive samples		Positive samples	
		number	%	number	%
Sheep raw milk	100	17	17.0	14	82.4
Sheep serum	100	23	23.0	21	91.3
Goat raw milk	100	19	19.0	17	89.5
Goat serum	100	27	27.0	23	85.2
Farm workers	30	7	23.3	4	57.1
Total	430	93	21.62	79	84.94



**Figure 1: *C. burnetii* phase II antibodies IgG by IFA under fluorescence microscope 400x**

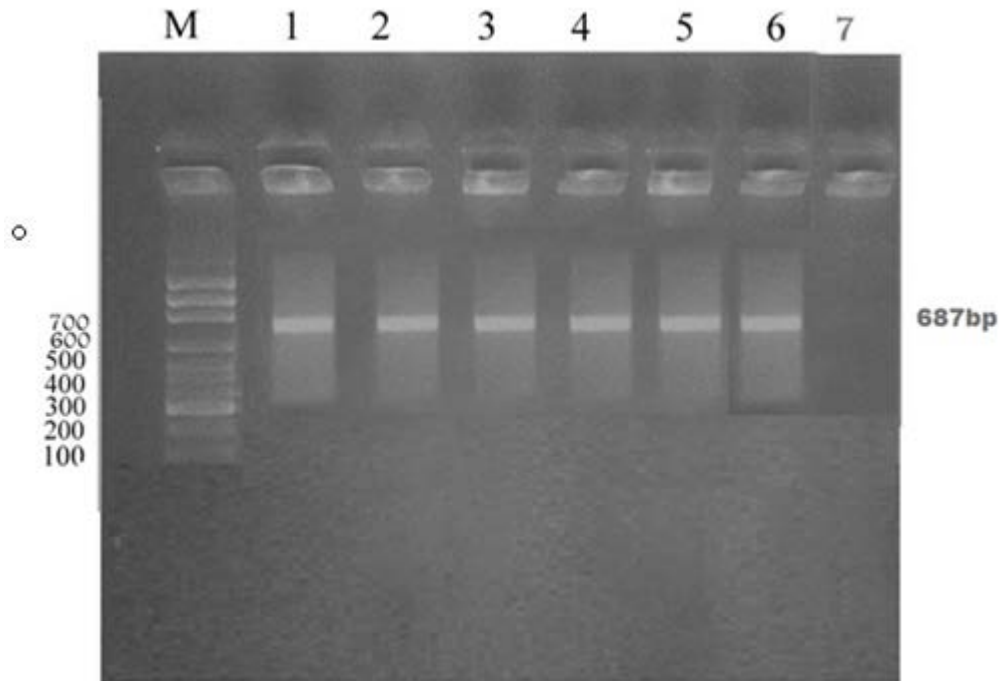


Figure 2: Agarose gel electrophoresis of PCR amplification of the 687 bp products of DNA extracted from positive *C. burnettii* phase II antibodies IgG. Lane M: 100bp molecular size DNA marker. Lanes 1 & 2: Positive sheep milk and serum samples, lanes 3 & 4: Positive goat milk and serum samples, lanes 5 & 6: Positive Human serum samples and lane 7: negative control

## Discussion

The first report of Q-fever outbreak was recorded in Australia in 1935, and then spread to almost worldwide up to date (Setiyono et al., 2005). The prevalence of Q fever was higher in females than in males, for her susceptibility. In addition, pregnancy is an important parameter in occurrence of Q fever and the higher seroprevalence rate of disease has been reported in sheep during pregnancy (Berri et al., 2001).

In the current study, IFAT revealed the presence of antibodies for *C. burnettii* where the seroprevalence of *C. burnettii* were 17% of sheep raw milk, 23% of sheep sera, 19% of goat raw milk and 27% of goat sera.

Previously in North Sinai, Egypt, the prevalence *C. burnettii* antibodies were detected in 22.5% and 16.8% of sheep and goats respectively (Mazyad & Hafez, 2007). In Sudan seropositivity to *C. burnettii* in healthy sheep and goats had been reported to be 62 % and 24.22% respectively (Reinthalder et al., 1988 ; Hussien et al., 2012). A total of 3 % analyzed sera had antibodies to *C. burnettii* in apparently healthy sheep in the region of Aydin, Turkey ( Kilic et al., 2005). The prevalence of antibodies in sheep was 0.6% while antibodies were not detected in Swedish goats (Ohlson et al., 2014). The prevalence of *C. burnettii* infection in animals were varied widely with species tested, year, geographic location, assay type, and criteria used to define positive results (McQuiston et al., 2002).

In Japan, a survey on the presence of Q fever in domestic ruminants reported values of 25.4% in healthy

cattle, 28.1% in sheep and 23.5% in goat. In Japanese bovine herds with reproductive disorders; the seroprevalence of Q fever was 84.3% (Htwe et al., 1992). In the European states to the moment it is not clear yet the exact entity of Q fever in domestic ruminants, since rules or recommendations are not harmonized for monitoring and report of the disease. Epidemiological data on Q fever in animals pointed out that the general prevalence of the disease in domestic ruminants is increased from the 7.4% to 10.0% within the period 2007 -2008. Particularly, the greatest increase had been recorded for goats, with values of 9.7% and 15.7% in 2007 and 2008, respectively. Member States mostly affected are Bulgaria, France, Germany and, in particular way, the Netherlands (EFSA Panel on Animal Health and Welfare, 2010). In Southern Italy the presence of *C. burnettii* in ovicaprine flocks had been reported ( Parisi et al., 2006). In Iran, all 110 ovine bulk milk samples from 31 sheep breeding farms were negative and only 1.8% (1/56) caprine bulk milk samples from 20 goat breeding farms was positive for *C. burnettii* (Rahimi et al., 2010). Gyuranecz et al., 2012 reported a seropositivity in sheep by CFT and ELISA as 0% (0/100) and 6.0% (3/50) respectively in Hungary. Also in China, the *C. burnettii* seroprevalence in Tibetan sheep serums which examined by ELISA was 14.39% ( Yin Ming –Yang et al., 2015) and in Northeastern China and inner Mangolia Autonomus region was 13.5% ( Cong Wei et al., 2015) . In the present work, farm workers were positive for IgG antibodies against *C. burnettii* phase II 23.33% (7/30). In Egypt previous researchers recorded seroprevalence of Q fever (*C.*

*burnetii*) among man as 5% and 32% in North Sinai and Nile Delta village respectively (Mazyad and Hafez ,2007 ; Corwin et al.,1993).

The present work revealed that the presence of *C. burnetii* antibodies for human in contact with sheep and goats (23.3%). While *C. burnetii* seropositivity was 16% for humans in close contact with *C. burnetii* seropositivity in 13% of cattle, 23% of goats, 33% of sheep, 0% of buffalo (Ghoniem and Abdel-moein, 2012) and higher than 1% of humans in close contact with seropositive 80% of camels, 4% of cattle, 13% of goats, 11% of sheep in Chad (Schelling et al.,2003). While the prevalence of *C. burnetii* infection in humans occupationally exposed to animals in Poland was 31.12% (Szymańska-Czerwińska et al.,2015). In the USA, 132 cases of Q fever with onset in 2008 have been reported; of these, 117 were acute Q fever and 15 were chronic Q fever (Nasphv and Cdc, 2011). A serological survey in Japanese healthy humans revealed a prevalence of 22.2% (Htwe et al., 1992). Moreover it has been observed that in Japanese children Q fever is often characterized by a clinical expression, mostly represented by atypical pneumonia (Hirai and To, 1998). A recent outbreak in the Netherlands started in 2007 and made the European Commission concerned about this zoonosis. The Dutch epidemic counted more than 2,200 confirmed human cases of the disease and more than 20 people died. In an effort to prevent the disease from spreading further, over 50,000 dairy goats were slaughtered and the government launched a mandatory animal vaccination campaign at the start of 2009. The main cause of infection has been attributed to infected goat and sheep farms located in the southern Brabant province (EFSA Panel on Animal Health and Welfare, 2010). Although the main route of infection in human is inhalation of contaminated aerosols, oral transmission by contaminated raw milk or unpasteurized dairy products is also a possible route of infection. Raw milk or dairy products produced from unpasteurized milk may contain virulent *C. burnetii* (Khazadi et al., 2014).

Serologic assay may detect antibodies to phase II and phase I *C. burnetii*. Phase II antibodies are more prevalent during acute infection, while chronic infection is characterized by a predominantly phase I antibody response (Fornier et al., 1998). The IFA results are the most specific and sensitive for phase II and phase I IgG antibodies and, to a lesser extent, also for the phase II and phase I IgM antibodies (Setiyono et al.,2005). Serologic techniques are not useful tools in order to determine which animal represents a current risk for transmission, as animals may seroconvert without shedding or remain seropositive long after the acute infection has resolved. Conversely, some animals may pose a risk for infection prior to the development of

antibodies by shedding the bacteria and some of the infected animals never seroconvert (Berri et al., 2001). In the current study, samples from the animals and humans that showed positivity IFA were further screened by the touch-down PCR (trans-PCR) for detection of *C. burnetii* in raw milk and blood. Trans-PCR assay was used for targeting the repetitive transposon-like region of *C. burnetii*. Touch-down PCR assay targeting the IS1111 gene of the organism by Trans-1 and trans-2 primers resulted in 14 of 17 sheep raw milk samples (82.4%), 21 of 23 sheep sera samples (91.3%), 17 of 19 goat milk samples (89.5%), and 23 of 27 (74.1%) goat serum samples were positive for *C. burnetii*, whereas 3 of 5 human serum samples (60%) were detected as positive at 687bp.

Previous studies found trans-PCR to be highly specific and sensitive for the direct detection of *C. burnetii* in genital swabs, milk and fecal samples from ewes (Berri et al., 2000), unpasteurized milk and dairy products in North – East of Iran (Khazadi, et al.2014) and clinical samples of women with spontaneous abortions (Vaidya et al., 2008). Moreover PCR has the efficiency to detect one *C. burnetii*-cell in 1 ml of milk (Berri et al., 2000).

Positive amplification was detected in the blood (5.3%) obtained from goats but not from sheep in Saudi Arabia (Mohammed et al.,2014). in North – East of Iran, 34.78% ( 8/23) sheep milk samples were found to be positive for *C. burnetii* DNA. However, 10 goat milk samples were found to be negative (Khazadi et al., 2014). Prevalence of *C. burnetii* ( 28% antibody positive herds) in clinically healthy German sheep flocks, whereas real-time PCR revealed the presence of *C. burnetii* DNA in 5% of the flocks (Hilbert et al., 2012). *C. burnetii* was identified by real-time PCR in 69.0% (113/163) and 75% (72/96) sheep and goat abortion submissions, respectively (Hazlett et al., 2013).

## Conclusion

The current results indicated that the apparently healthy sheep and goats are an important reservoir of *C. burnetii* infection. Investigations on *C. burnetii* using PCR as well as serological surveys of animals are important methods for diagnosis and control of Q-fever. Although the isolation of the pathogen is the reliable method for diagnosis, but it is a time consuming and requires biosafety 3 practices. The extreme persistence of *C. burnetii* in the environment and its diffusion in domestic ruminants and wild animals indicated therefore that good management practices played an important critical role for the control of Q fever, not only in animals but also in man .

## References

1. Berri M, Laroucau K, Rodolakis A. The detection of *Coxiella burnetii* from ovine genital swabs, milk and fecal samples by the use of a single touchdown polymerase chain reaction. *Vet Microbiol* 2000; 72:285–293.
2. Berri M, Sourlau A, Crosby M, Crochet D, Lechopler P, Rodolakis A. Relationships between the shedding of *Coxiella burnetii*, clinical signs and serological responses of 34 sheep. *Vet Rec* 2001; 148: 502-505.
3. Borriello G, Iovane G, Galiero G. La febbre Q negli animali domestici. *Large Animal Review* 2010; 16: 273-283.
4. Cong Wei, Meng Qing-Feng, Shan Xiao-Feng, Sun Wu-Wen, Kang Yuan-Huan, Chen Long, Wang Wei-Li, and Qian Ai-Dong. *Coxiella burnetii* (Q fever) infection in farmed ruminants in three Northeastern Provinces and Inner Mongolia Autonomous region, China. *Vector-Borne and Zoonotic Diseases* 2015; 15(8): 512-514
5. Corwin A, Habib M, Watts D, Darwish M, Olson J. Community based prevalence profile of arboviral, rickettsial, and Hantaan-like viral antibody in the Nile River Delta of Egypt. *Am J Trop Med Hyg* 1993; 48: 776–783.
6. ECDC (EUROPEAN CENTRE FOR DISEASE PREVENTION AND CONTROL). Panel with Representatives from the Netherlands, France, Germany, United Kingdom, United States of America. Risk assessment on Q fever. ECDC Technical Report 2010; 40 pp.
7. EFSA (EUROPEAN FOOD SAFETY AUTHORITY). Panel on Animal Health and Welfare (AHAW); Scientific Opinion on Q Fever. *EFSA Journal* 2010; 8 (5):1595, 114pp.
8. Fornier PE, Marrie TJ, Raoult D. Diagnosis of Q fever. *J Clin Microbiol* 1998; 36: 1823-1834.
9. Ghoniem NH, Abdel-moein, AK. Seroprevalence of *Coxiella burnetii* antibodies among farm animals and human contacts in Egypt. *J Am Sci* 2012; 8:619–621.
10. Gilroy N, Formica N, Beers M, Egan A, Conaty S, Marmion B. Abattoir associated Q fever: a Q fever outbreak during a Q fever vaccination program. *The Australian and New Zealand Journal of Public Health* 2001; 25(4): 362-367.
11. Gyuranecz M, Dénes B, Hornok S, Kovács P, Horváth G, Jurkovich V, Varga T, Hajtós I, Szabó R, Magyar T, Vass N, Hofmann-Lehmann R, Erdélyi K, Bhide M, Dán Á. Prevalence of *Coxiella burnetii* in Hungary: screening of dairy cows, sheep, commercial milk samples, and ticks. *Vector Borne Zoonotic Dis.* 2012; 12(8):650-653.
12. Hazlett MJ, McDowall R, DeLay J, Stalker M, McEwen B, Dreumel TV, Spinato M, Binnington B, Slavic D, Carman S, Cai HY. A prospective study of sheep and goat abortion using real-time polymerase chain reaction and cut point estimation shows *Coxiella burnetii* and *Chlamydophila abortus* infection concurrently with other major pathogens. *Journal of Veterinary Diagnostic Investigation* 2013; 25(3): 359–368.
13. Hilbert A, Schmoock G, Lenzko H, Moog U, Diller R, Fröhlich A, Hoffmann L, Horner S, Elschner M, Tomaso H, Henning K, Neubauer H, Sprague LD. Prevalence of *Coxiella burnetii* in clinically healthy German sheep flocks. *BMC Research Notes* 2012; 145:152
14. Hirai K, To H. Advances in the understanding of *Coxiella burnetii* infection in Japan. *J Vet Med Sci* 1998; 60:781–790.
15. Hoover TA, Vodkin MH, Williams JC. A *Coxiella burnetii* repeated DNA element resembling a bacterial insertion sequence. *J Bacteriol* 1992; 174: 5540-5548.
16. Htwe KK, Amano K, Sugiyama Y, Yagami K, Minamoto N, Hashimoto A, Yamaguchi T, Fukushi H, Hirai K. Seroepidemiology of *Coxiella burnetii* in domestic and companion animals in Japan. *Vet Rec* 1992; 131: 490.
17. Hussien MO, ElFahal AM, Enan KA, Taha KM, Mohammed MS, Salih DA, Mohammadain SI, Saeed AA, El-Hussein AM. Seroprevalence of Q fever in Goats of the Sudan, *Vet World* 2012; 5(7):394-397.
18. Khanzadi S1, Jamshidi A1, Razmyar J, Borji Sh. Identification of *Coxiella burnetii* by touch-down PCR assay in unpasteurized milk and dairy products in North - East of Iran. *Iranian Journal of Veterinary Medicine* 2014; 8(1):15-19.
19. Kilic S, Pasa S, Babur C, Ozlem MB. Investigation of *Coxiella burnetii* antibodies in sheep in Aydin region, Turkey. *Revue Méd Vét* 2005; 156(6): 336-340.
20. Kovacova E, Kazar J. Q fever-still a query and underestimated infectious disease. *Acta Virol* 2002; 46: 193-210
21. Maurin M, Raoult D. Q fever. *Clinical Microbiology Reviews* 1999; 12(4): 518-553.
22. Mazyad SA and Hafez AO. Q fever (*Coxiella burnetii*) among man and farm animals in North Sinai, Egypt. *J Egypt Soc Parasitol.* 2007; 37(1):135-42.
23. McQuiston JH, Childs JE, Thompson HA. Q fever. *Zoonosis updates J Am Vet Med Assoc* 2002; 221: 796-799.
24. Mohammed OB, Jarelnabi AA, Aljumaah RS, Alshaikh MA, Bakhiet AO, Omer SA, Alagaili AN, Hussein MF. *Coxiella burnetii*, the causative agent of Q fever in Saudi Arabia: molecular detection from camel and other domestic livestock. *Asian Pacific Journal of Tropical Medicine* 2014; 715-719.
25. NASPHV (National Association of State Public Health Veterinarians, Inc.) & CDC (Centers for Disease Control and Prevention). *Compendium of*



- measures to prevent disease associated with animals in public settings, 2011: National Association of State Public Health Veterinarians, Inc. MMWR Recommendations and reports 2011; 60: 1-24.
26. Ohlson A, Malmsten J, Frössling J, Bölske G, Aspán A, Dalin AM, Lindberg A. Surveys on *Coxiella burnetii* infections in Swedish cattle, sheep, goats and moose. *Acta Veterinaria Scandinavica* 2014; 56: 39.
  27. OIE, Manual of Diagnostic Tests and Vaccines for Terrestrial Animals. Q fever. World Organisation for Animal Health 2010; Chapter 2.1.12, (May), pp.1-13, ISBN 978- 92-9044-718-4.
  28. Parisi A, Fracalvieri R, Cafiero M, Miccolupo A, Padalino I, Montagna C, Capuano F, Sottili R. Diagnosis of *Coxiella burnetii*-related abortion in Italian domestic ruminants using single-tube nested PCR. *Veterinary Microbiology* 2006; 118 (1-2): 101-106.
  29. Rahimi E, Doosti A, Ameri M, Kabiri E, Sharifian B. Detection of *Coxiella burnetii* by Nested PCR in bulk milk samples from dairy bovine, ovine, and caprine herds in Iran. *Zoonoses Public Health* 2010; 57: 38-41.
  30. Reinthaler FF, Mascher F, Sixl W, Arpessner CH. Incidence of Q fever among cattle, sheep and goats in upper Nile province in southern Sudan. *Vet Rec* 1988; 122: 137.
  31. Rodolakis, A. Q fever in dairy animals. *Annals of the New York Academy of Sciences* 2009; 1166: 90-93.
  32. Schelling E, Diguimbaye C, Daoud S, Nicolet J, Boerlin P. Brucellosis and Q-fever seroprevalences of nomadic pastoralists and their livestock in Chad. *Prev Vet Med* 2003; 61: 279–293.
  33. Setiyono A, Ogawa M, Cai Y, Shiga S, Kishimoto T, Kurane I. New criteria for immunofluorescence assay for Q fever diagnosis in Japan. *J Clin Microbiol* 2005; 43:5555–5559.
  34. Slabá K, Skultéty L, Toman R. Efficiency of various serological techniques for diagnosing *Coxiella burnetii* infection. *Acta Virol* 2005;49(2):123-7.
  35. Szymańska-Czerwińska M, Galińska EM, Niemczuk K, Knap JP. Prevalence of *Coxiella burnetii* Infection in Humans Occupationally Exposed to Animals in Poland. *Vector Borne Zoonotic Dis.* 2015;15(4):261-267.
  36. Tissot-Dupont H, Thirion X, Raoult D. Q fever serology: cutoff determination for microimmunofluorescence. *Clin Diagn Lab Immunol* 1994; 1: 189–196.
  37. Vaidya VM, Malik SV, Kaur S, Kumar S, Barbuddhe SB. Comparison of PCR, immunofluorescence assay and pathogen isolation for diagnosis of Q fever in humans with spontaneous abortions. *J Clin Microbiol* 2008; 46: 2038-2044.
  38. Van den Brom R, Santman-Berends I, Luttikholt S, Moll L, Van Engelen E, Vellema P. Bulk tank milk surveillance as a measure to detect *Coxiella burnetii* shedding dairy goat herds in the Netherlands between 2009 and 2014. *J Dairy Sci* 2015; 98(6):3814-25.
  39. Wilson LE, Couper S, Prempeh H, Young D, Pollock KG, Stewart WC, Browning LM, Donaghy M. Investigation of a Q fever outbreak in a Scottish collocated slaughterhouse and cutting plant. *Zoonoses and Public Health* 2010; 57(7-8): 493-498.
  40. Yin Ming-Yang, Qin Si-Xian, Tan Qi-Dong, Feng Sheng-Yong, Liu Guang-Xue, Zhbu Dong-Hui, Zhu Xing-Quan. First report of *C. burnetii* seroprevalence in Tibetan sheep in China. *Vector-Borne and Zoonotic Diseases* 2015; 15(7):419-422.